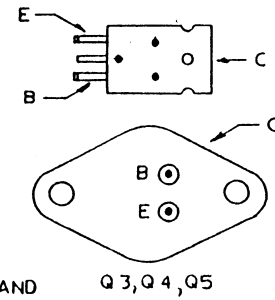
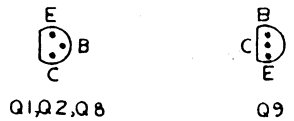


**NOTE: ASSEMBLY PROCEDURE (4 PLACES)**

TIGHTEN HEX HEAD SCREW AND NUT #1 FIRST - DO SO BY TURNING THE HEX HEAD SCREW RATHER THAN THE NUT. USE 16 IN./OZ TORQUE.

AFTER ASSEMBLING REMAINING COMPONENTS AND TRANSISTORS TIGHTEN NUT #2 USING 16 IN./OZ TORQUE.

TRANSISTORS Q3, Q4 AND Q5 MOUNTING NUTS AND SCREWS ARE TIGHTENED BY TURNING THE NUTS. USE 9 IN./OZ TORQUE.



**BOTTOM VIEWS**

A MISC CHANGES		5/10/71
THE STANDEL CO. EL MONTE, CALIF		
SCALE: 2 X	APPROVED BY:	DRAWN BY HMM
DATE: 3/5/71		REVISED A
POWER AMPLIFIER PICTORIAL		
DRAWING NUMBER		21/29D